

MainDbConverter.exe

Standard- and Organizer database converting software for

smart-chart 3

Documentation

Table of Contents

1. General	3
2. Installation and Start-up.....	3
2.1 Technical Specifications.....	3
Minimum hardware requirements:.....	3
Software	3
Installation.....	3
3. Functions	4
3.1 Function 1: „Convert old bykmaindb.sdf to new local bykmaindb_3.sdf“	4
3.2 Function 2: „Convert old bykmaindb.sdf and send data to an empty SQL Server database“	5
3.3 Function 3: „Migrate local bykmaindb_3.sdf content to an empty SQL Server database“	7
3.4 Function 4: „Read old standard/organizer xml-file and convert to new format“	8
4. Updates	10

1. General

1.1 *System Description*

MainDbConverter.exe is a database converting software for smart-chart 3. Because smart-chart 3 uses the Microsoft SQL Server Compact 4 data provider and has different database structure as smart-chart 2, it is needed to read and convert all the data from the old bykmaindb.sdf in order to let the users work further with their standards and organizers with smart-chart 3. The software can manage data migration from the old database directly to a MS SQL Server database.

2. Installation and Start-up

2.1 *Technical Specifications*

Minimum hardware requirements:

Processor:	2GHz or faster
RAM:	2 GB
Available disk space:	500 MB

Software

Operating system:	Windows XP SP3, Windows Vista, Windows 7
Framework:	.Net 4

Installation

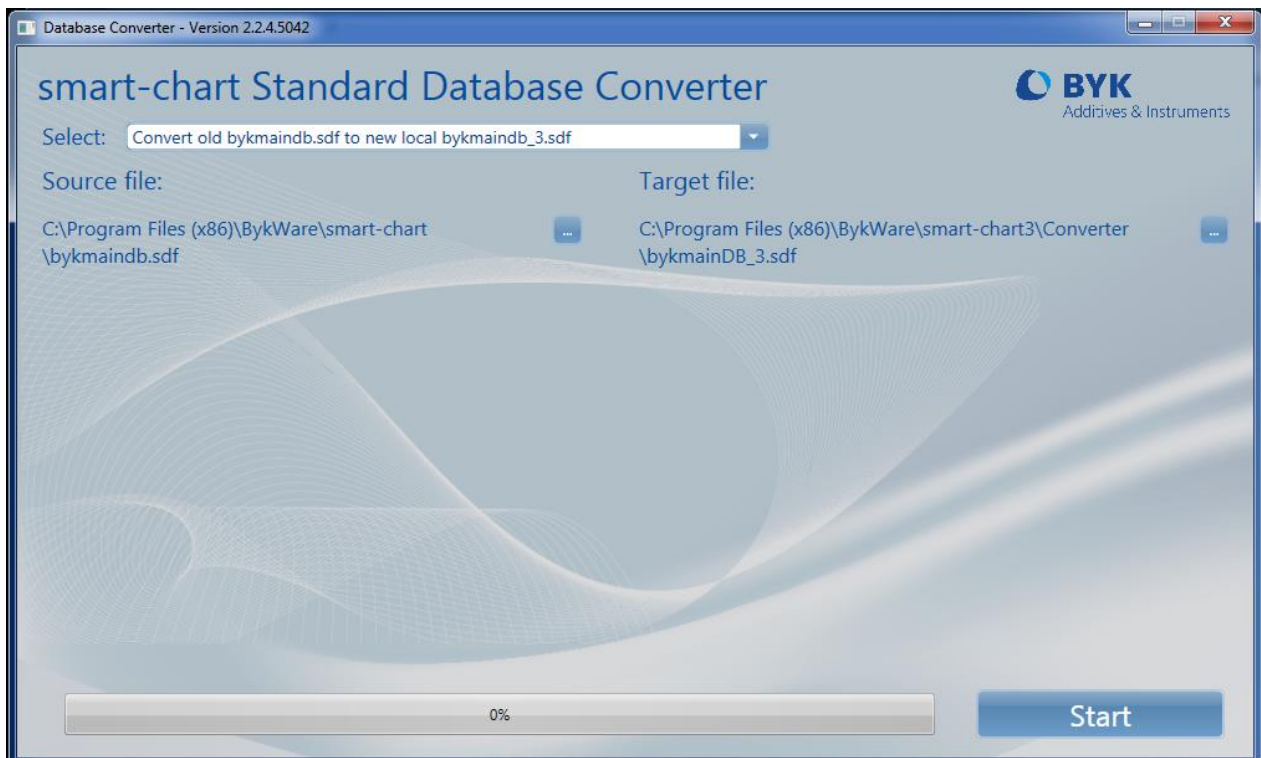
Install smart-chart. You can read the smart-chart installation details in the documentation. MainDbConverter.exe is part of the installation. It is placed in the directory smart-chart 3\Converter\

3. Functions

The software has 4 functions. The first 3 are different database conversions and migrations; the 4th is a file conversion for exported standard and organizer files.

3.1 Function 1:

„Convert old bykmaindb.sdf to new local bykmaindb_3.sdf“



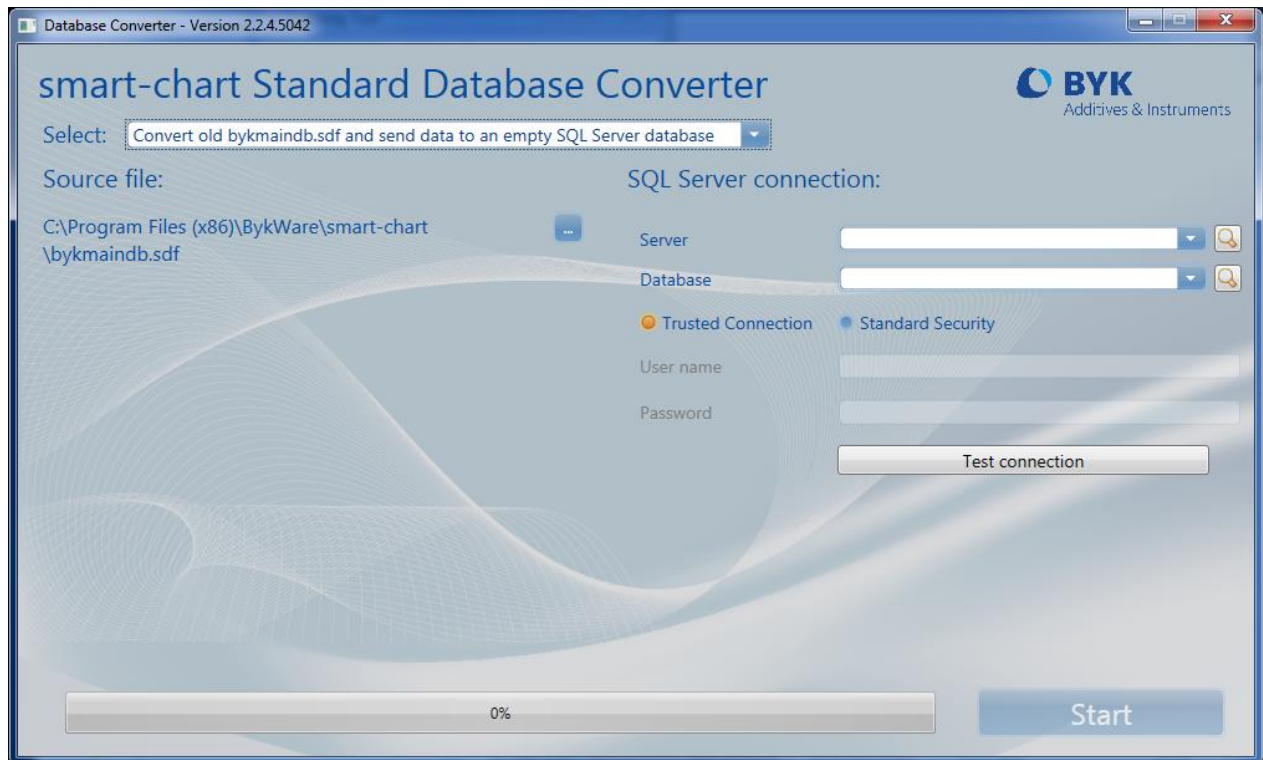
This is the default selection. The software reads all data from bykmaindb.sdf (Source file) which contains the user-defined standards and organizers, converts them into the new database format and writes the data into a new database file named bykmainDB_3.sdf. It automatically selects the path of bykmaindb.sdf, but it is possible to choose another bykmaindb file with the browse button.



Also the target file path can be changed. If the user is satisfied with the settings, the conversion can be started with the “Start” button. The name of the currently converted standard or organizer is shown together with the percentage of the progress.

3.2 Function 2:

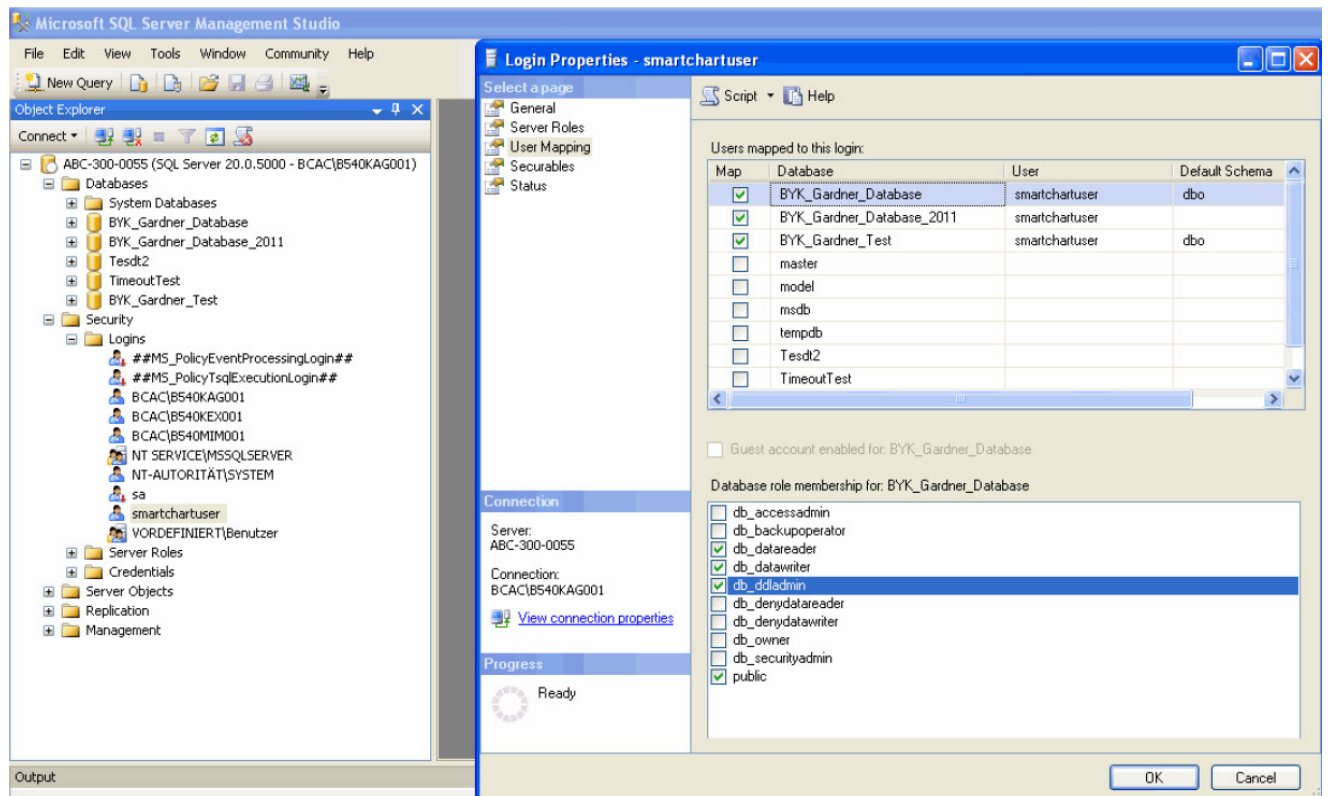
„Convert old bykmaindb.sdf and send data to an empty SQL Server database“




The source file is the bykmaindb.sdf again, but the target database is an SQL Server one.


Preparing an SQL Server database for using with smart-chart

The converter needs an empty database to work with; otherwise the software stops and returns an error message. The user has to have the db_datareader, db_datawriter and db_ddladmin rights on the database to be able to let the converter run. It is possible to use the existing windows credentials (trusted connection) or registering a new user in the database directly (Standard Security). The picture below shows the settings in SQL Server Management Studio.



The Connection Settings

Server: it is possible to type it in directly, but the user can also get a list of the available servers on the network by pressing the  button and selecting the needed server from the list. It can take 20 -30 seconds depending on the network speed and the available server amount.

Database: it is possible to type in the name, but if the server name is already set after clicking on the  button the user can select the database name from the combobox.

Trusted Connection: this means, your windows credentials (user name and password) will be send to the SQL Server as log in parameters. This option can be used if they are registered on the server.

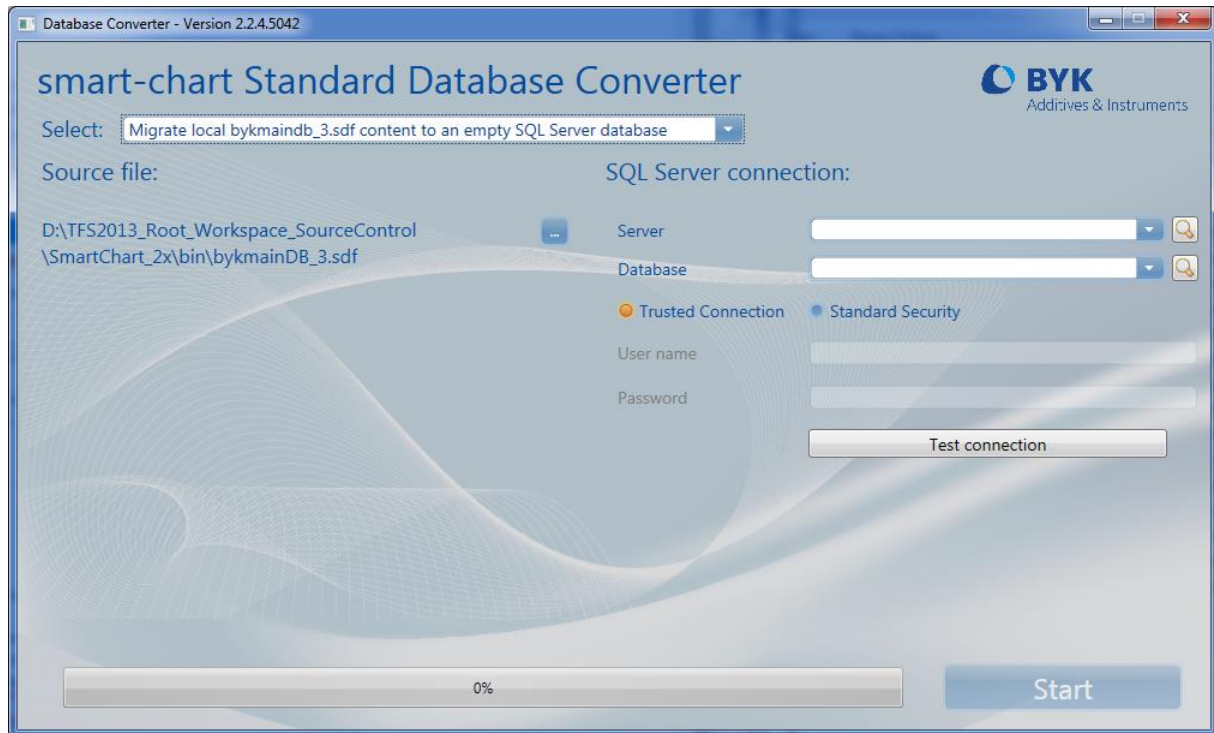
Standard Security: If this radio button is activated the user has to fill in the “User name” and “Password” textboxes within the database registered name and password. It can be common for all smart-chart user.

Test connection: A so called “Connection string” will be generated from the given information and used to connect the server database. With a successful connection a green check mark is shown on the window, otherwise it returns with an error message.

If the user is satisfied with the settings and the connection was successfully tested, the conversion can be started with the “Start” button. The name of the currently converted standard or organizer is shown together with the percentage of the progress.

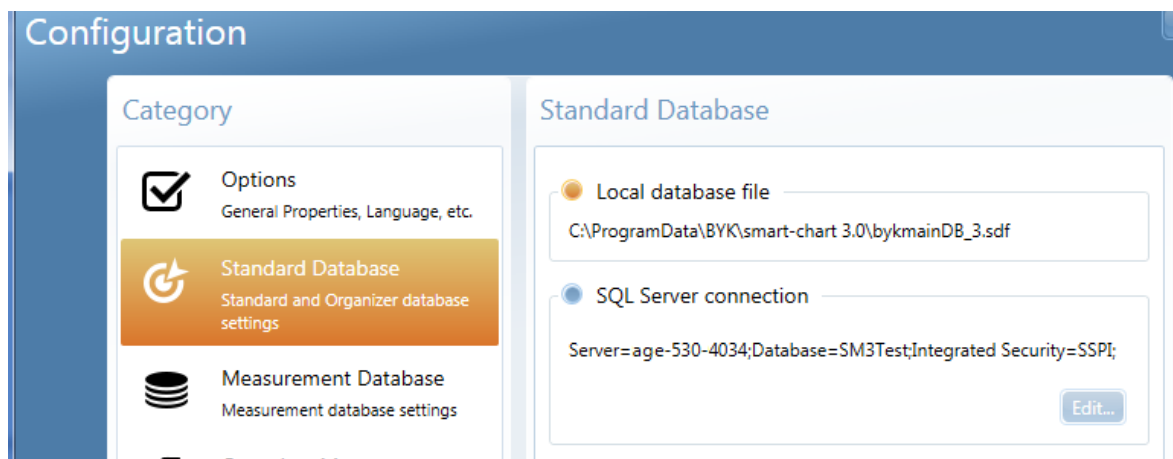
3.3 Function 3:

„Migrate local bykmaindb_3.sdf content to an empty SQL Server database“



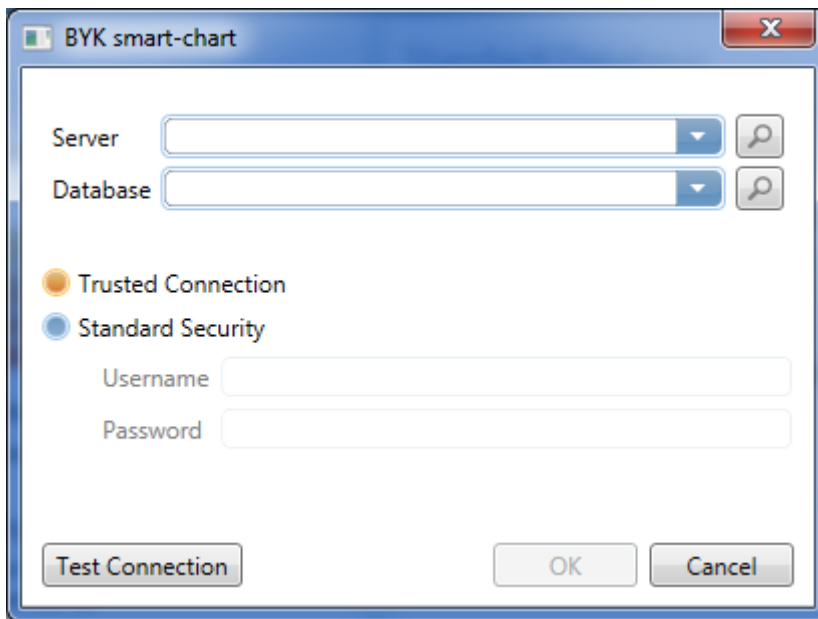
It is similar to the previous function but the source database file is a new bykmaindb_3.sdf. This option will be used when the user wants to save the data from the local standard and organizer database file used / created by smart-chart 3 to an SQL Server database. All the settings are the same as in 3.2.

As smart-chart 3 uses, for standards and organizers, the local database file bykmaindb_3.sdf by default, the user has to connect the server database in the "Configuration" module. Then it is possible to switch between local and server databases.



Updated on August 10, 2015

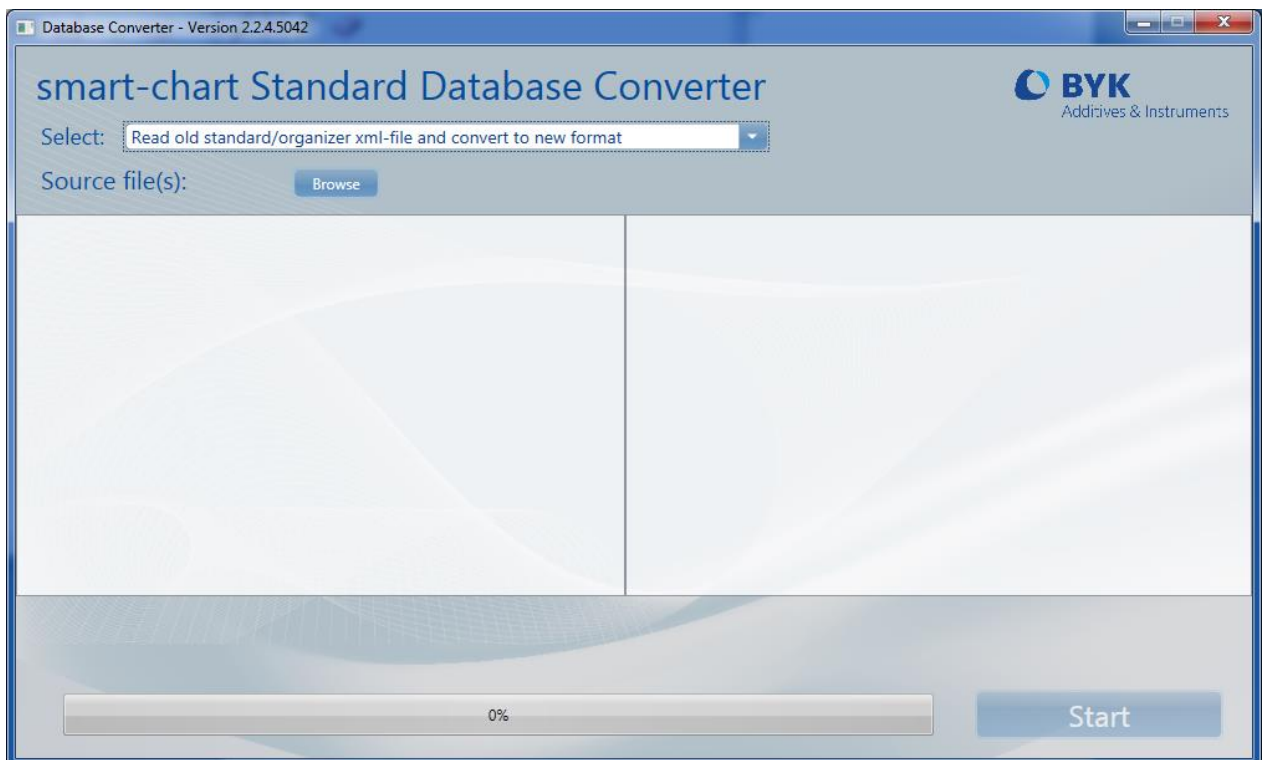
Click on “Edit”. This window will be shown:



All the settings are the same as in 3.2.

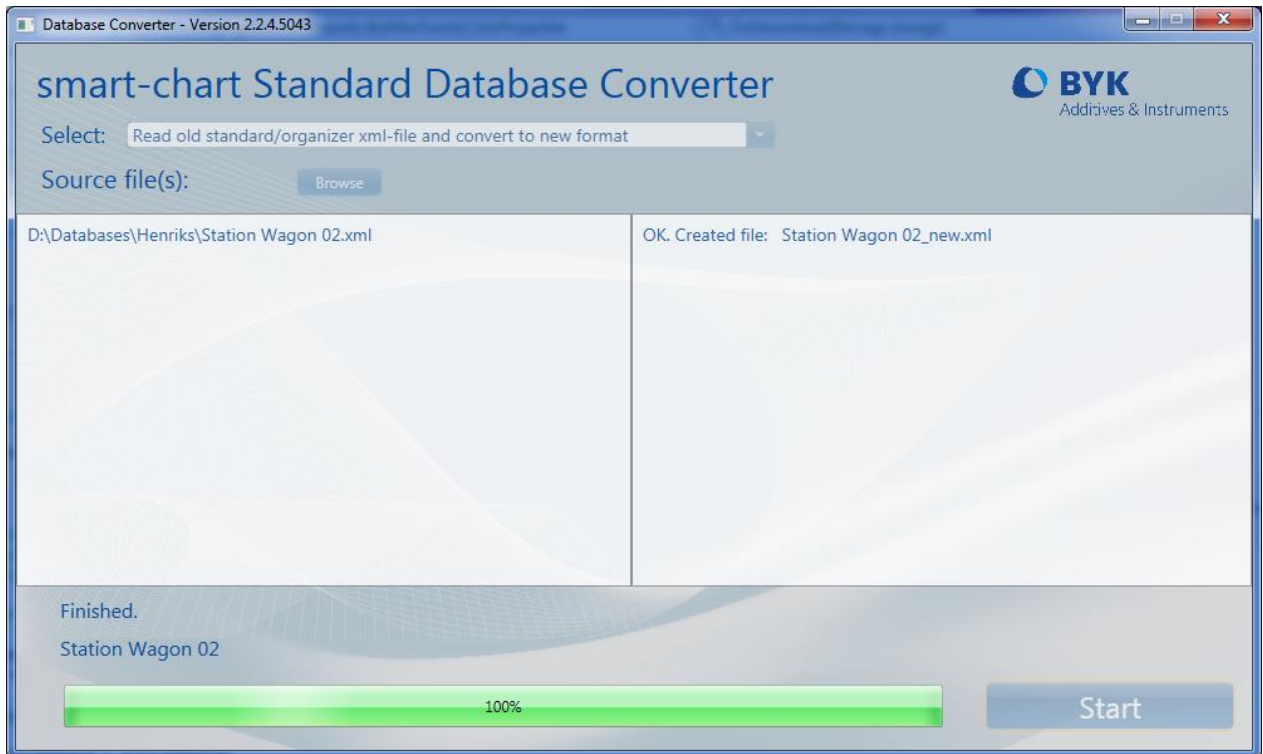
3.4 Function 4:

„Read old standard/organizer xml-file and convert to new format“



Updated on August 10, 2015

With this function users can convert standard and organizer files exported by smart-chart 2 to the new smart-chart 3 file format. Pressing the browse button opens a window which can be used to select the file or files (multi selection is possible). The converter creates a new file next to the old one. The new file name will be the old one extended with “_new”. See picture below:



4. Updates

The latest version of MainDbConverter.exe can be downloaded from the following link:

<https://dc2.safesync.com/FgfhzWV/smart-chart%20converter/Converter.zip?a=XxeFumGeGnM>

Procedure:

1. Close smart-chart.
2. Download "Converter.zip" from the link above.
3. Extract the directory "Converter".
4. Copy the "Converter" directory.
5. Open the smart-chart3 folder. The default folder is C:\Program Files\BykWare\smart-chart3 on a 32-bit operating system and C:\Program Files (x86)\BykWare\smart-chart3 on a 64-bit operating system.
6. Paste and confirm the question for overwriting all existing files.